

2

INSTALLATION AND CONNECTIONS

■ Unpacking

After unpacking, immediately report any damage to the delivering carrier or dealer. Keep the shipping cartons.

For a description and a diagram of accessory equipment included with the ID-1, see 'Supplied Accessories' on p. iv of this manual.

■ Selecting a location

Select a location for the transceiver that allows adequate air circulation, free from extreme heat, cold, or vibrations, and away from TV sets, TV antenna elements, radios and other electromagnetic sources.

■ Antenna connection

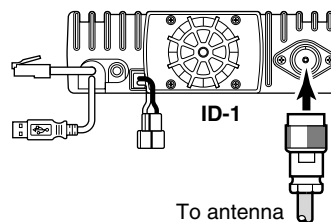
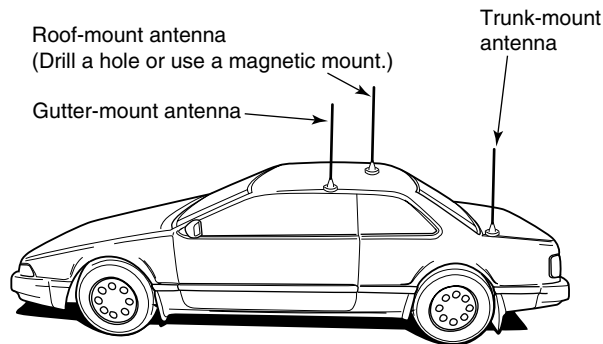
For radio communications, the antenna is of critical importance, along with output power and sensitivity. Select antenna(s), such as a well-matched 50 Ω antenna, and feedline. 1.5:1 or better of Voltage Standing Wave Ratio (VSWR) is recommended for your desired band. Of course, the transmission line should be a coaxial cable.

CAUTION: Protect your transceiver from lightning by using a lightning arrestor.

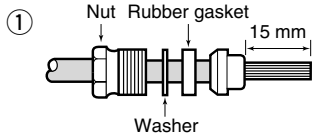
NOTE: There are many publications covering proper antennas and their installation. Check with your local dealer for more information and recommendations.

• Antenna location for mobile operation

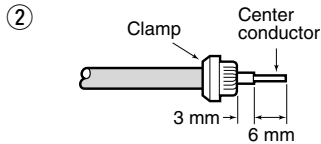
To obtain maximum performance from the transceiver, select a high-quality antenna and mount it in a good location. A non-radial antenna should be used when using a magnetic mount.



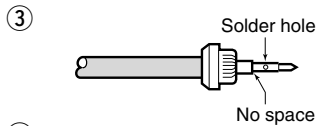
Type-N Connector Installation Example



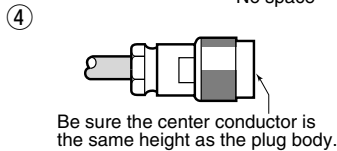
Slide the nut, washer, rubber gasket and clamp over the coaxial cable, then cut the end of the cable evenly.



Strip the cable and fold the braid back over the clamp.



Soft solder the center conductor. Install the center conductor pin and solder it.



Carefully slide the plug body into place aligning the center conductor pin on the cable. Tighten the nut onto the plug body.

15 mm \approx $\frac{19}{32}$ in 6 mm \approx $\frac{1}{4}$ in 3 mm \approx $\frac{1}{8}$ in

2 INSTALLATION AND CONNECTIONS

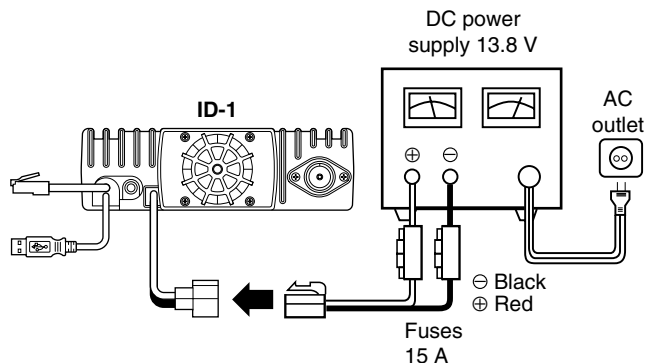
■ Power supply connections

CAUTION: Before connecting the DC power cable, check the following important items. Make sure:

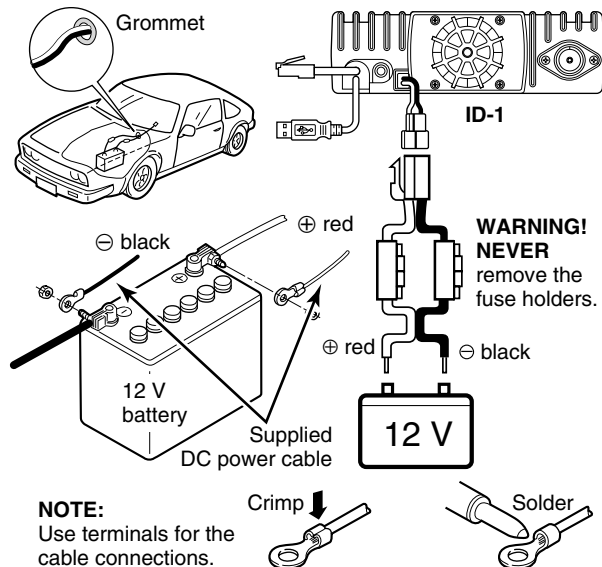
- The [POWER] switch is OFF.
- Output voltage of the power source is 12–15 V when you use a power supply.
- DC power cable polarity is correct.
 - Red : positive ⊕ terminal
 - Black : negative ⊖ terminal

Use a DC power supply with a 10 A capacity and above when operating the transceiver with AC power. Refer to the diagrams below.

• Connecting to a DC power supply



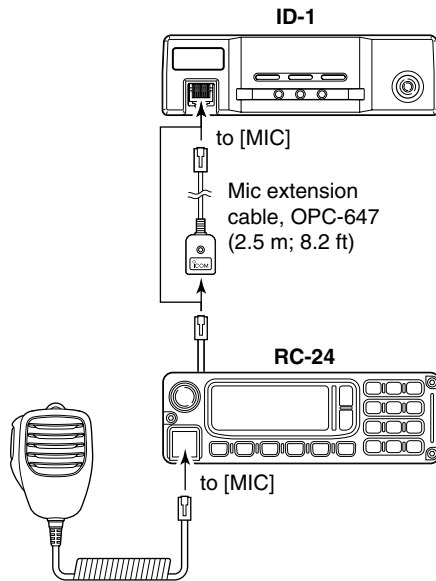
• Connecting to a vehicle battery



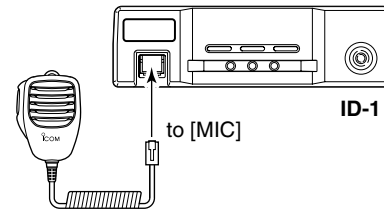
■ Microphone and speaker connections

Connect the supplied microphone to the [MIC] connector on the remote controller (RC-24) or front panel and the speaker to the [SP] connector on the rear panel as follows.

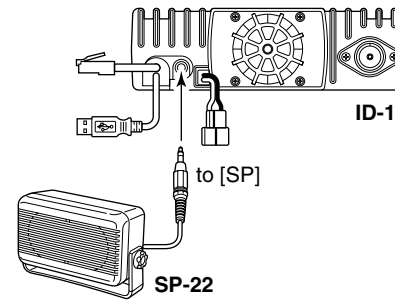
• Microphone connection through RC-24



• Microphone connection without RC-24



• Speaker connection



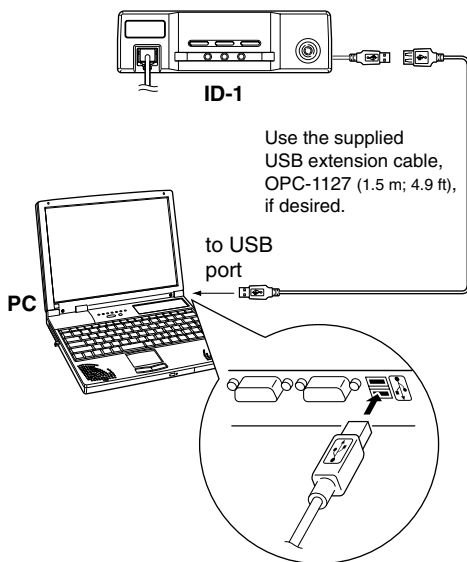
2 INSTALLATION AND CONNECTIONS

■ Connecting a PC

◇ PC connection for control

USB (Universal Serial Bus) cable is used for the connection between the ID-1 and a PC.

An USB extension cable, OPC-1127 (1.5 m; 4.9 ft), is supplied with the transceiver for extended connection.

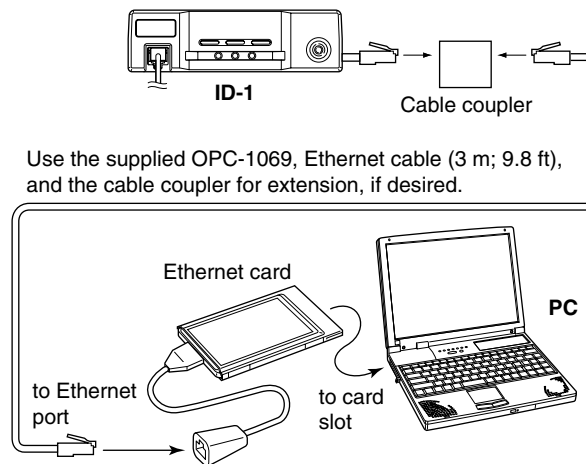


/// **NOTE:** When connecting the ID-1 and the PC through an USB hub, use the self-powered type.

◇ PC connection for data operation

Ethernet cable connection is additionally required for the data operation.

Connect the Ethernet receptacle to the Ethernet port on your PC directly or through the supplied extension cable with the cable coupler, if desired.



/// **NOTE:** When no Ethernet port is available with your PC, install an Ethernet card and its driver before connecting the ID-1. Ask your local computer dealer for details about installing a Ethernet card to your computer.

/// The displayed dialog boxes or indications may differ slightly from the following instructions according to your system conditions, or environment.

■ Microsoft® Windows® XP

- ① Connect the ID-1 to the desired USB port.
 - Push [POWER] to turn the power ON.
 - “Found New Hardware” appears as below.



- ② The “Found New Hardware Wizard” will come up as below. Insert the supplied CD into the CD drive, select “Install the software automatically (Recommended),” then click [Next>].



3 DRIVER INSTALLATION

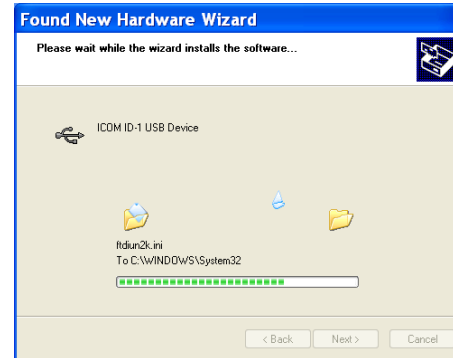
- ③ The wizard starts searching for the driver and shows the dialog below during search.



- ④ After the driver is found, the “Hardware Installation” dialog box appears as below. Click [Continue Anyway] to start the installation.



- ⑤ Windows starts installing the USB driver.



- ⑥ After the installation is completed, click [Finish].



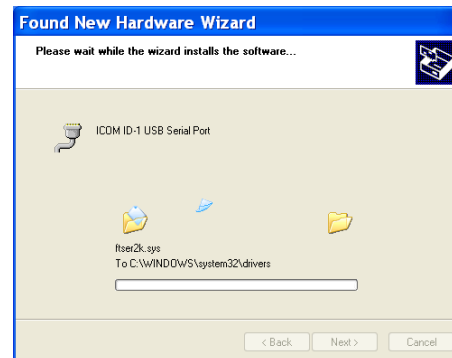
- ⑦ The “Found New Hardware Wizard” will come up again to install the USB serial port driver. Select “Install the software automatically (Recommended),” then click [Next>].



- ⑧ After the driver is found, the “Hardware Installation” dialog box appears as below. Click [Continue Anyway] to start the installation.

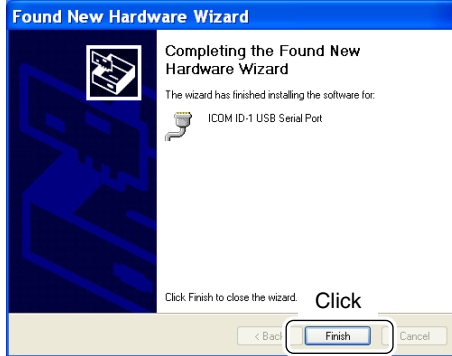


- ⑨ Windows starts installing the USB driver.



3 DRIVER INSTALLATION

⑩ After the installation is completed, click [Finish].



⑪ After clicking [Finish], the dialog appears as below.

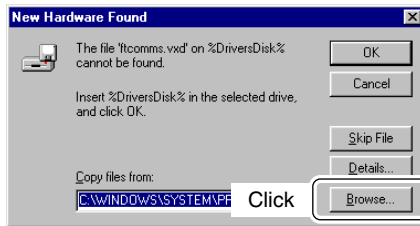


⑫ Eject the CD.

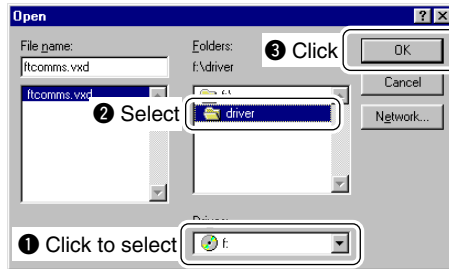
- Rebooting the PC is recommended.

■ Microsoft® Windows® 98/Me

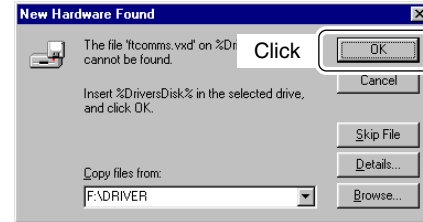
- ① Connect the ID-1 to the desired USB port.
 - Push [POWER] to turn the power ON.
 - “New Hardware is found” dialog box appears.
- ② The “New Hardware Found” will come up as below. Click [Browse...].



- ③ Insert the supplied CD into the drive.
- ④ Click [▼] to select the appropriate CD-ROM drive then click “Driver” folder. After the driver is found, click [OK].



- ⑤ Click [OK].
 - The driver installation starts.

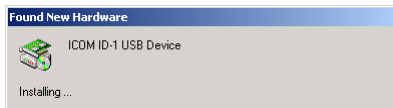


- ⑥ After the installation, eject the CD.
 - Rebooting the PC is recommended.

3 DRIVER INSTALLATION

■ Microsoft® Windows® 2000

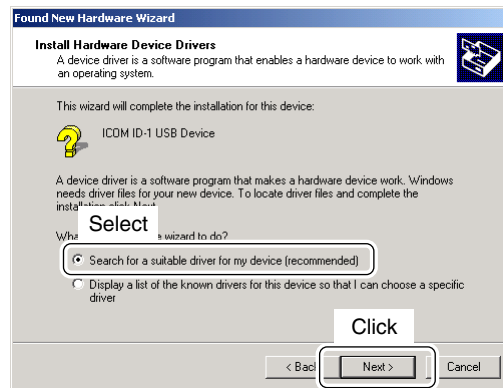
- ① Connect the ID-1 to the desired USB port.
 - Push [POWER] to turn the power ON.
 - “Found New Hardware” dialog box appears below.



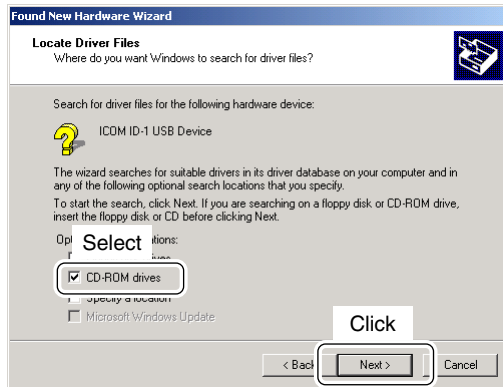
- ② The “Found New Hardware Wizard” will come up as below. Click [Next>].



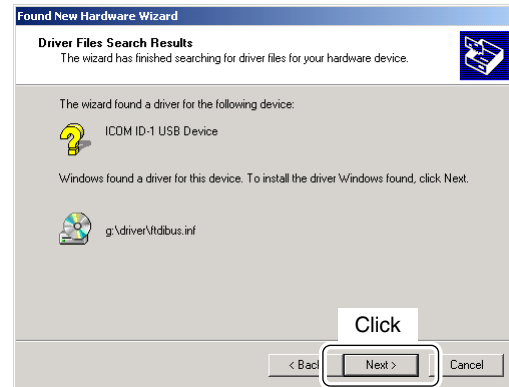
- ③ Select “Search for a suitable driver for my device (recommended),” then click [Next>].



- ④ Select “CD-ROM drives,” and insert the supplied CD into the CD drive, then click [Next>].



- ⑤ When the driver is found, the following dialog is displayed. Click [Next>] to start the installation.



NOTE: When the appropriate driver is not found, a different dialog is displayed. In such case, click [<Back], select “Specify a location,” click [Next>], then type “D:\driver” in the text box to select the “Driver” folder in the CD (if CD drive is D).

3 DRIVER INSTALLATION

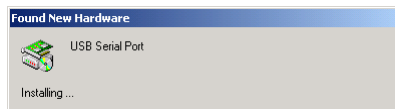
⑥ After the installation is completed, click [Finish].



⑧ Click [Next>].



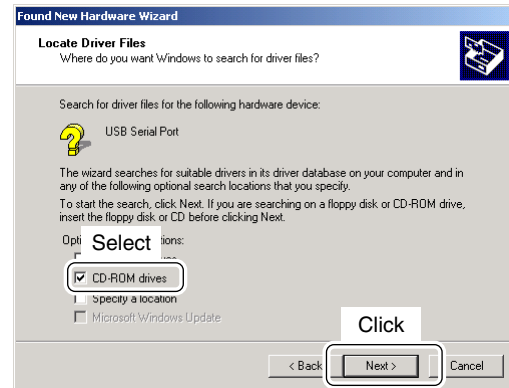
⑦ The "Found New Hardware" wizard appears again.



- ⑨ Select “Search for a suitable driver for my device (recommended),” then click [Next>].

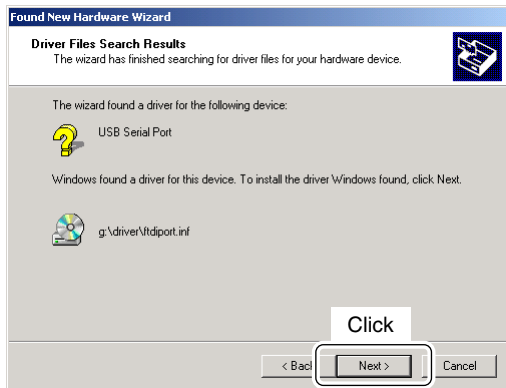


- ⑩ Select “CD-ROM drives,” then click [Next>].



3 DRIVER INSTALLATION

- ① When the driver is found, the following dialog is displayed. Click [Next>] to start the installation.



NOTE: When the appropriate driver is not found, a different dialog is displayed. In such case, click [<Back], select "Specify a location," click [Next>], then type "D:\driver" in the text box to select the "Driver" folder in the CD (if CD drive is D).

- ② After the installation is completed, click [Finish].



- ③ Eject the CD.
- Rebooting the PC is recommended.

■ COM port confirmation

After the driver installation, confirm the driver availability and the port number are recommended.

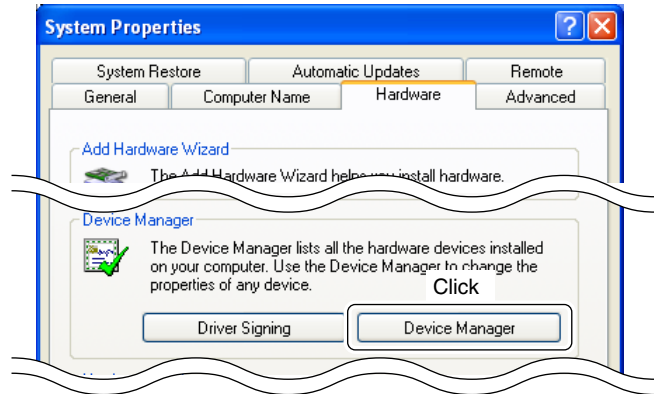
In this section, screen shots of Windows XP are used for instruction example. However, the instructions are similar to another operating systems, Windows 98, Me and 2000.

- ① Boot up the Windows.
- ② Select the “Control Panel” in the Start menu.
 - Control panel appears as shown in the next step below.
- ③ Click the “Performance and Maintenance.”
 - Performance and Maintenance menu appears.

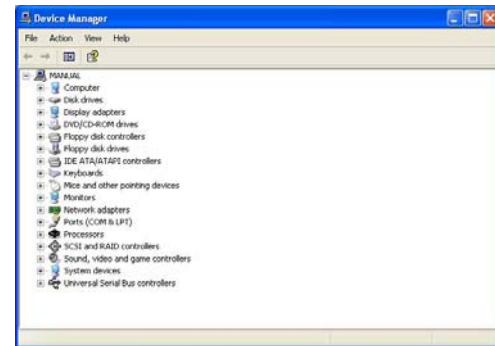


- ④ Click the “System,” then click the “Hardware” tab in the displayed System Properties screen.

- ⑤ Click the [Device Manager].

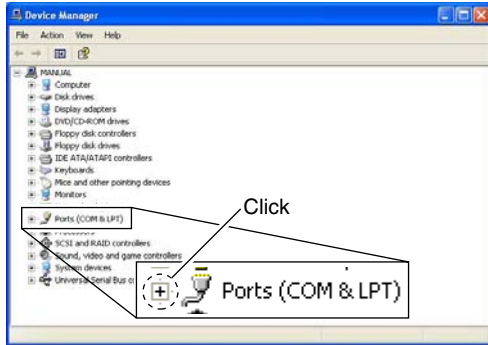


- Device Manager screen appears as below.



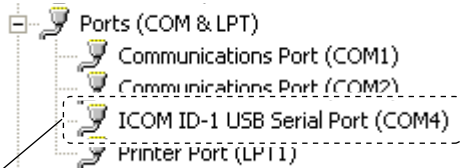
3 DRIVER INSTALLATION

- ⑥ Click “+” of the “Ports (COM & LPT)” to display the usable COM port and the port number.



- ⑦ Confirm the USB serial port availability and the COM port number.

- The COM port number is used for the COM port setup. (p. 32)

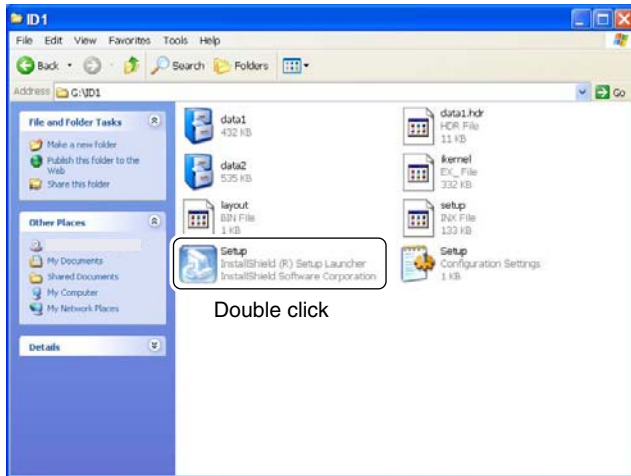


Confirm the USB serial port availability and the COM port number.

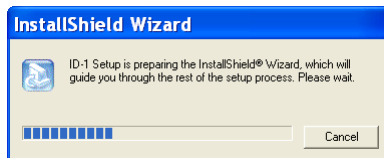
(In this example, the USB serial port number is “4.”)

- ⑧ Close the Device Manager, System Properties screen and then Control panel.

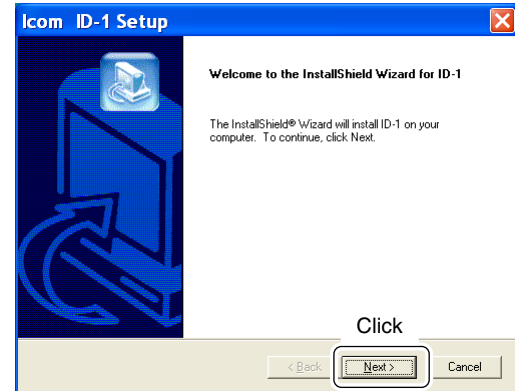
- ① Insert the CD into the CD drive.
- ② Open the CD drive contents via “My computer” or “Windows Explorer.”
 - “Driver” and “ID1” folders are available.
- ③ Double click “Setup.exe” file in “ID1” folder.



- The “InstallShield® Wizard” starts preparing the installation.

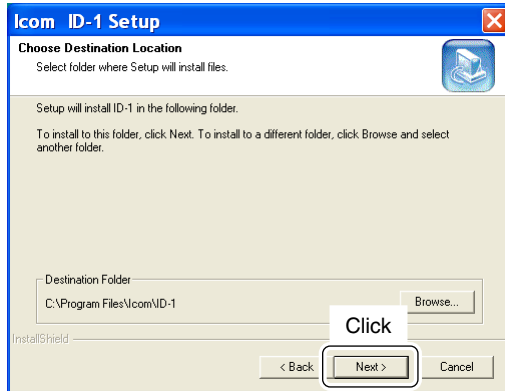


- ④ After the preparation, the following dialog is displayed. Click [Next>].



4 APPLICATION INSTALLATION

⑤ Confirm the location, then click [Next>] to start the installation.



- Click [Browse...] then type the desired location if you specifying the installation location.

⑥ After the installation is completed, click [Finish].



- ⑦ Eject the CD.
- The ID-1 shortcut icon is created on the desktop.
 - Rebooting the PC is recommended.